



国家（上海）新型互联网交换中心

NATIONAL(SHANGHAI) NEW-TYPE INTERNET EXCHANGE POINT

[www.shixp.cn](http://www.shixp.cn)



国家（上海）新型互联网交换中心

NATIONAL (SHANGHAI) NEW-TYPE INTERNET EXCHANGE POINT

# *Content*

INTRODUCTION TO SHIXP

**01**

NETWORK ARCHITECTURE

**02**

PRODUCTS AND SERVICES

**03**

INTRO

PARTNERS

**04**



**01**

# INTRODUCTION TO SHIXP

## Our principles

- Neutrality
- Small and Controlled profits
- Safety

## Our Services

- Private wire network. The total length is about 810km, which can cover 70% of the data centers in Shanghai, with an average point-to-point delay of 1.26ms.
- Platform. First computing power trading platform in China, providing a "neutral, open, fair and trustworthy" trading environment.
- Products. Providing public and private peering, clouding services, cloud-network integration, international acceleration, computility trading, and security services.



# 01 / INTRODUCTION TO SHIXP



# 01 / INTRODUCTION TO SHIXP

SHIXP

国家（上海）新型互联网交换中心  
NATIONAL INTERNET EXCHANGE CENTER (SHANGHAI)





**02**

# NETWORK ARCHITECTURE

## Overall structure

### Three functional zones



#### Network zone

The Fabric Layer 2 network is mainly composed of core layer P devices and access layer PE devices. SW or PE devices provide customer access to facilitate elastic expansion.



#### Management zone

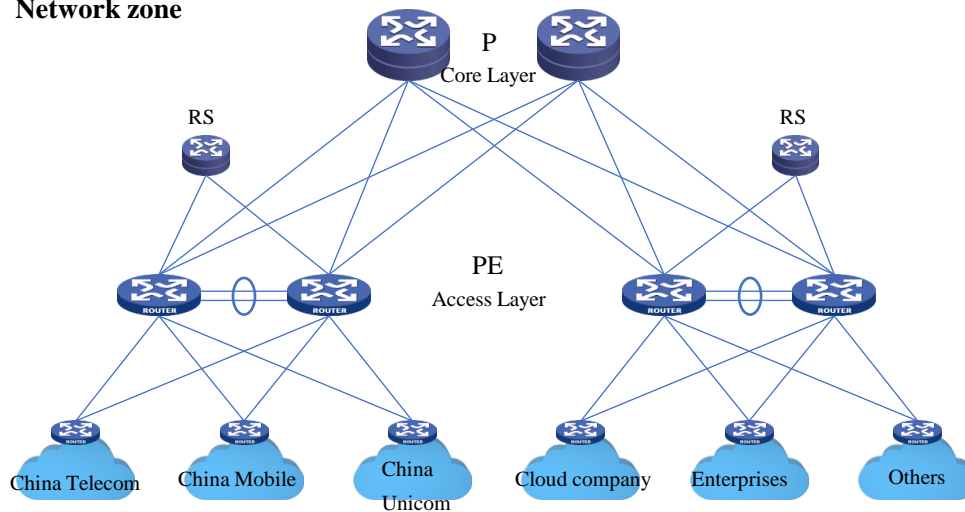
Including an SDN-based network management platform and a traffic monitoring and analysis system.



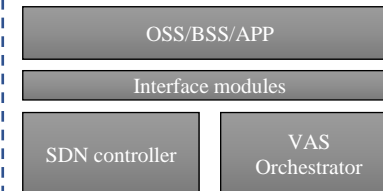
#### Safety Zone

Mainly including the information security of the network area and the self-security protection related systems and facilities of the management area

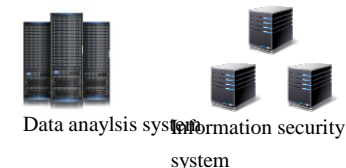
#### Network zone



#### Management zone



#### Safety zone



Building an IXP network foundation based on IPv6+

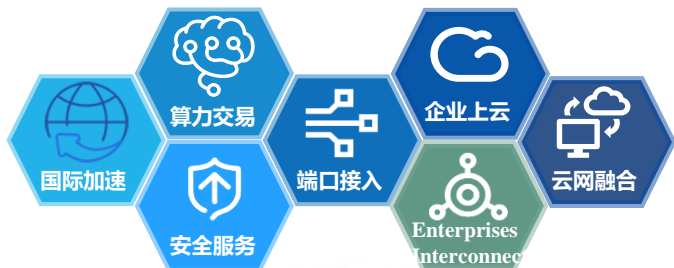




**03**

# **PRODUCTS AND SERVICES INTRODUCTION**

## Product services



One point of access  
multi points of  
interconnection

### Port Access

Through peer-to-peer interconnection with SHIXP partners, achieving higher operational efficiency, business quality and quicker digital transformation

### Peering

Personalized peering type with personalized directions, rates, flexibility and high SLA guarantee.

### Clouding services

Safer, more reliable and more economical cloud deployment and multi-cloud deployment solutions

### Cloud-Network Interagtion

Reduced costs of enterprise access to Internet bandwidth and cloud network dedicated line

### Computility trade

Improve the utilization rate and solving the problem of computing power shortage.

### International acceleration

Improve the office efficiency of enterprises' international business and reduce access delays and packet loss rates.

### Safety services

A variety of advanced security solutions in the industry to comprehensively protect the enterprise's IT infrastructure from the threat of network security incidents.

## Building an open network ecosystem

### Features

Layer 2 channel, a dedicated channel for enterprises to directly access carriers' international data network and a VPN line

### Scenario

for enterprises with international access needs and high performance requirements.

### Features

greatly improving the efficiency of data interaction and access performance between enterprises.

### Scenario

ISP, ICP, CSP, IDC, CDN, etc. with large traffic exchange needs

### Features

Allowing enterprises to directly establish BGP neighbors with carriers, publish their own IP addresses in the carrier's network, and receive the operator's full route in real time.

### Scenario

enterprises in industries such as ICP (finance, gaming, live broadcasting, instant messaging, etc.), IDC, cloud service providers, etc.

Transfer  
interconnection  
International  
acceleration

Public  
Peering

Transfer  
Interconnection  
BGP

Private  
Peering

### Features

Enterprises can directly exchange traffic with each other and achieve isolation of authorized enterprises and businesses.

### Scenario

For enterprise groups with special interconnection needs.

Static  
transfer  
Interconnection

### Features

Carriers assign a public IP address to the enterprise, and the enterprise network configuration is relatively simple.

### Scenario

For enterprises in industries such as ICP (video on demand, news, search, etc.), CDN, etc. that have access needs to operators and do not have high requirements for network performance

## Data Center



## Technology Companies



## Industrial Enterprise



## Industrial Park

## Values

Optimize networking architecture  
Save operational and maintenance expenses

Reduce access latency 25%

Improve access quality 30%

Reduced network costs 10%



## Partners

Private Cloud  
Industry Cloud  
Intelligent Computing Center  
Supercomputing Center

Computing power  
supplier enterprise

Internet Enterprise  
industry users  
High tech Industrial  
Park  
Research institutes

Demanding computing  
power enterprise

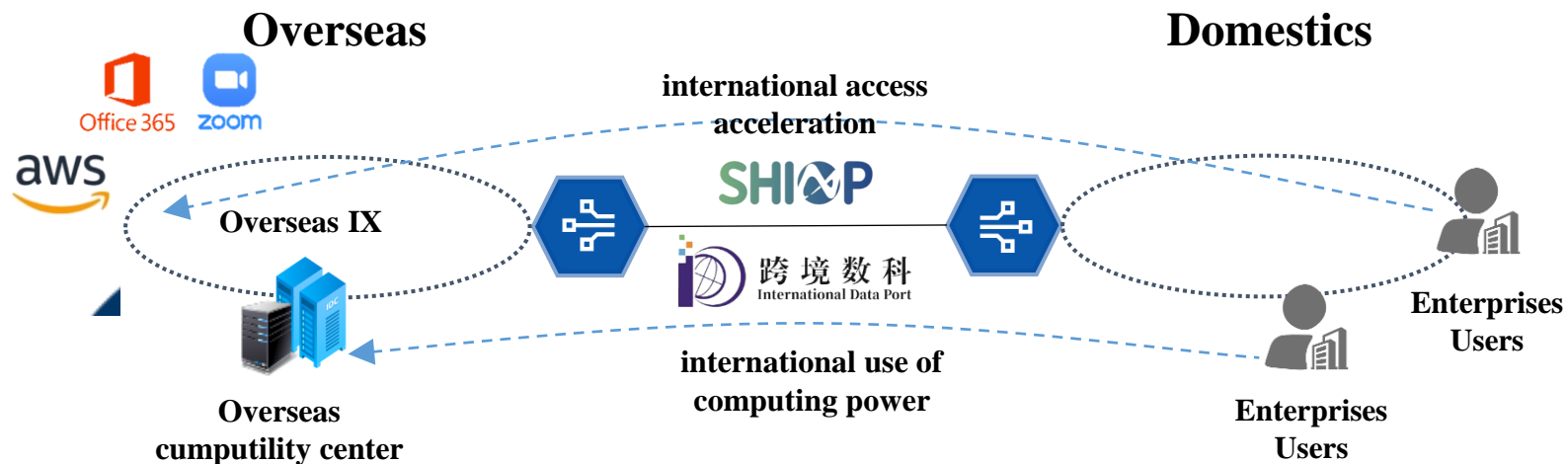
## Values

**Supplier**  
Provide computing power  
resources

Improve input-output  
efficiency

**Demander**  
Publish computing power  
requirements

Reduce data  
transmission costs



### Potential Partners

- |                          |                     |
|--------------------------|---------------------|
| international e-commerce | Biopharmaceutical   |
| Global education         | semiconductor       |
| Foreign-invested         | AI                  |
| Domestic international   | Smart Manufacturing |

International access acceleration

International use of computing power

### Values

High-speed connection with overseas cumputility resources and directional remote peering

Latency reduced by more than 20%

Directed access quality improved by more than 25%



**04**

**Partners**

# 04 / Partners

SHIXP

Shanghai New-type Internet  
Exchange Point Co.,Ltd  
url: <https://www.shixp.cn/>  
mail: [noc@shixp.cn](mailto:noc@shixp.cn)

ASN: AS146761、AS146762  
as-set: AS-SHIXP

Peers: 8

Connections: 18


Open Peers: 7

Total Speed: 1.7T

%with IPv6: 55%

## Peering DB

SHIXP  
国家（上海）新型互联网交换中心  
NATIONAL (SHANGHAI) NEW-TYPE INTERNET EXCHANGE POINT


Register or Login  
[Advanced Search](#) [Legacy Search](#) English (English)

### SHIXP

Peers	Connections	Open Peers	Total Speed	% with IPv6
8	18	7	1.7T	55

[EXPORT](#)

Organization	NATIONAL(SHANGHAI) NEW-TYPE INTERNET EXCHANGE POINT
Also Known As	
Long Name	
City	上海市
Country	CN
Continental Region	Asia Pacific
Media Type	Ethernet
Service Level	Not Disclosed
Terms	Not Disclosed
Last Updated	2023-05-30T10:16:17Z
Notes	



国家（上海）新型互联网交换中心  
NATIONAL (SHANGHAI) NEW-TYPE INTERNET EXCHANGE POINT

#### Contact Information

Company Website	<a href="https://www.shixp.cn/">https://www.shixp.cn/</a>
Traffic Stats Website	<a href="https://www.shixp.cn/switch/flowOverview">https://www.shixp.cn/switch/flowOverview</a>
Technical Email	<a href="mailto:gjlinchao@shixp.cn">gjlinchao@shixp.cn</a>
Technical Phone	+8615921099091
Policy Email	
Policy Phone	
Sales Email	
Sales Phone	
Health Check	

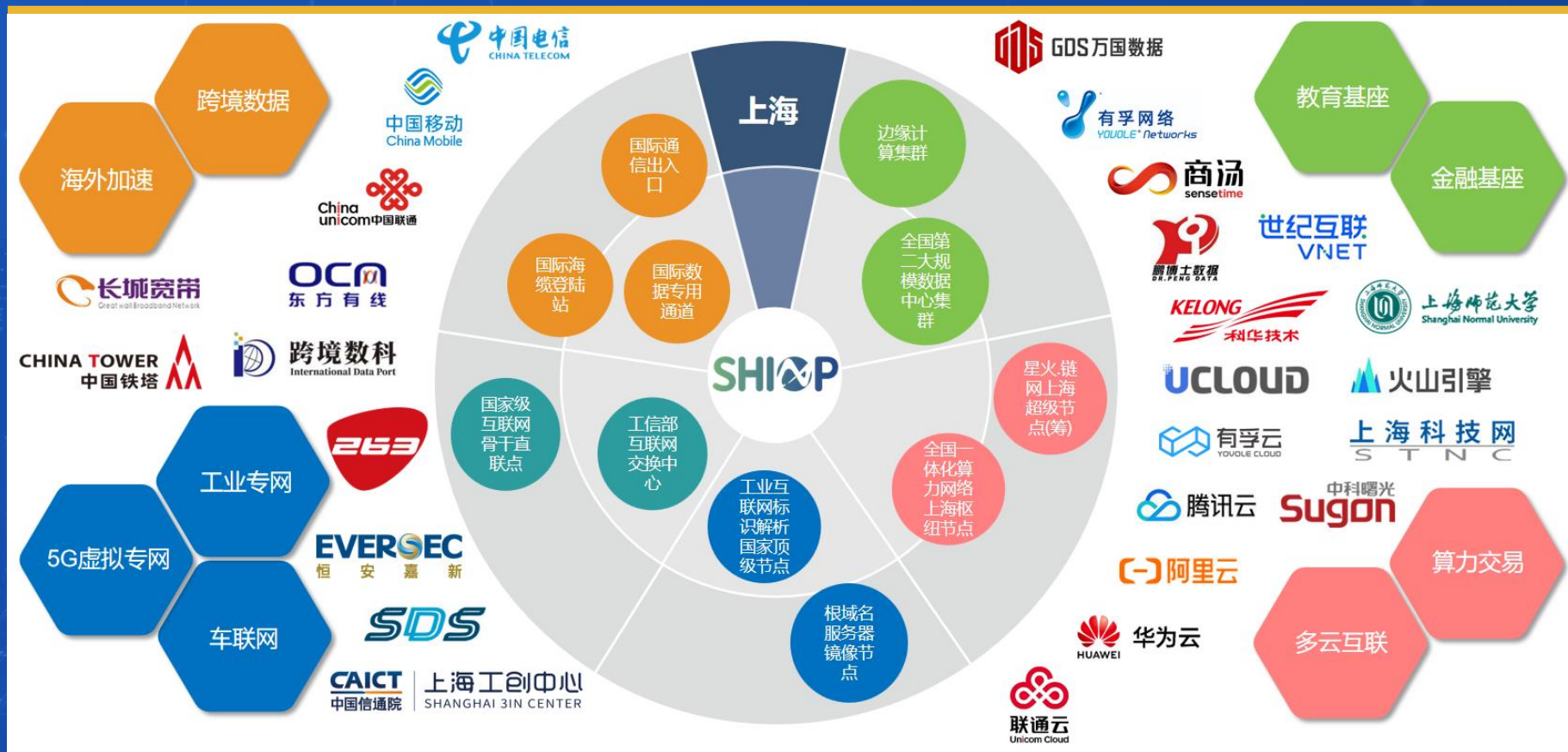
#### Peers at this Exchange Point

Peer Name	ASN	Speed	Policy
IPv4	IPv6		
Allbaba (China) 103.183.26.29	37963	100G	Open
Allbaba (China) 103.183.26.28	37963	100G	Open
GDS-NET 103.183.26.16	45079 2400:5f60:0:8::16	10G	Open
GDS-NET 103.183.26.15	45079 2400:5f60:0:8::15	10G	Open
Huawei Cloud (China) 103.183.26.24	55990	100G	Selective
Huawei Cloud (China) 103.183.26.25	55990	100G	Selective
Huawei Cloud (China) 103.183.26.26	55990 2400:5f60:0:8::26	100G	Selective
Huawei Cloud (China) 103.183.26.27	55990 2400:5f60:0:8::27	100G	Selective
SHIXP Networks 103.183.26.3	146762 2400:5f60:0:8::3	200G	Open
SHIXP Networks 103.183.26.4	146762 2400:5f60:0:8::4	200G	Open
SHIXP Route Servers 103.183.26.2	146761 2400:5f60:0:8::2	200G	Open
SHIXP Route Servers 103.183.26.1	146761 2400:5f60:0:8::1	200G	Open



# 04 / Partners

## Resource sharing with partners



**Thank you for your time!**



**0 2 1 - 9 6 2 5 0 8**



**CONSULT@SHXP.CN**